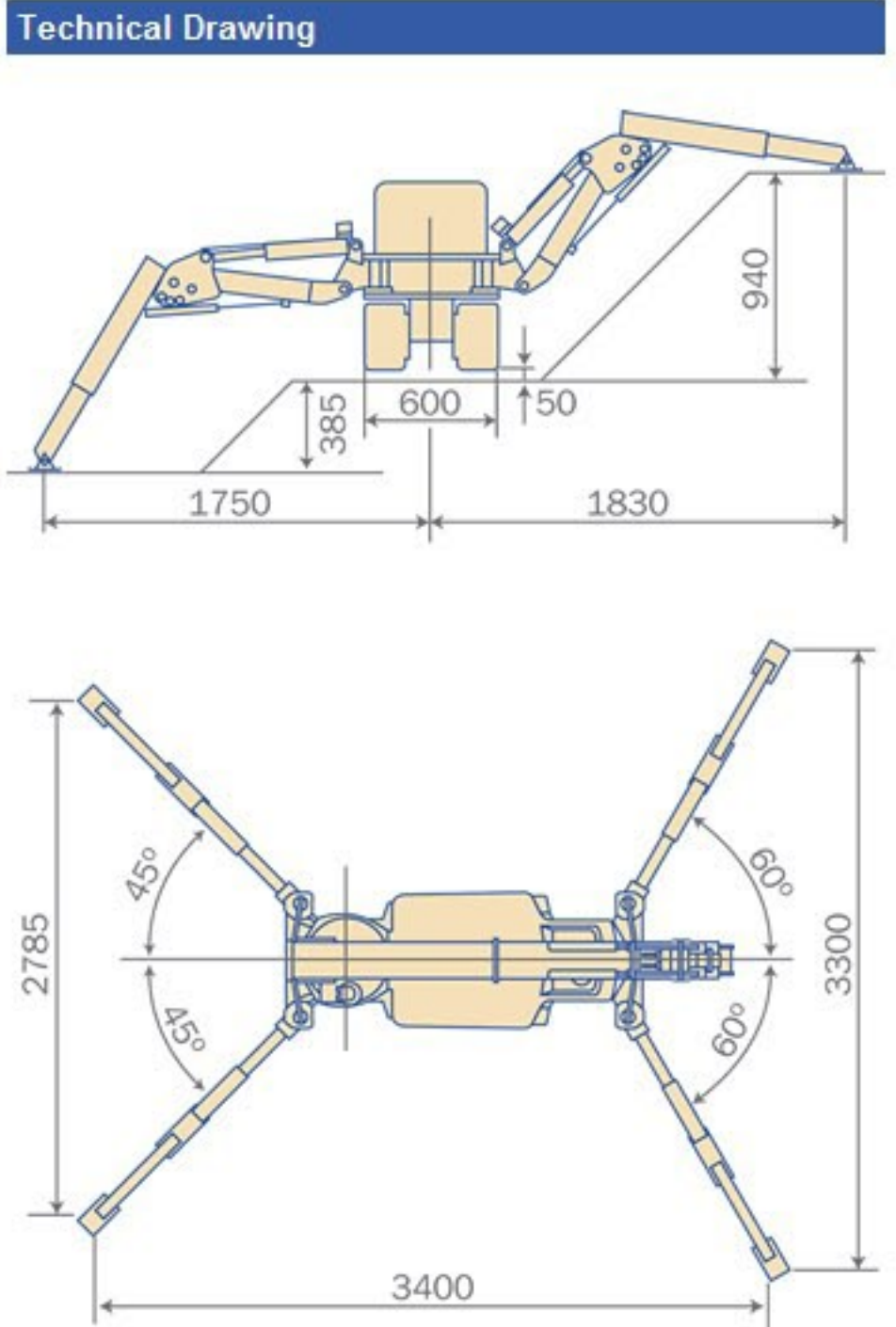
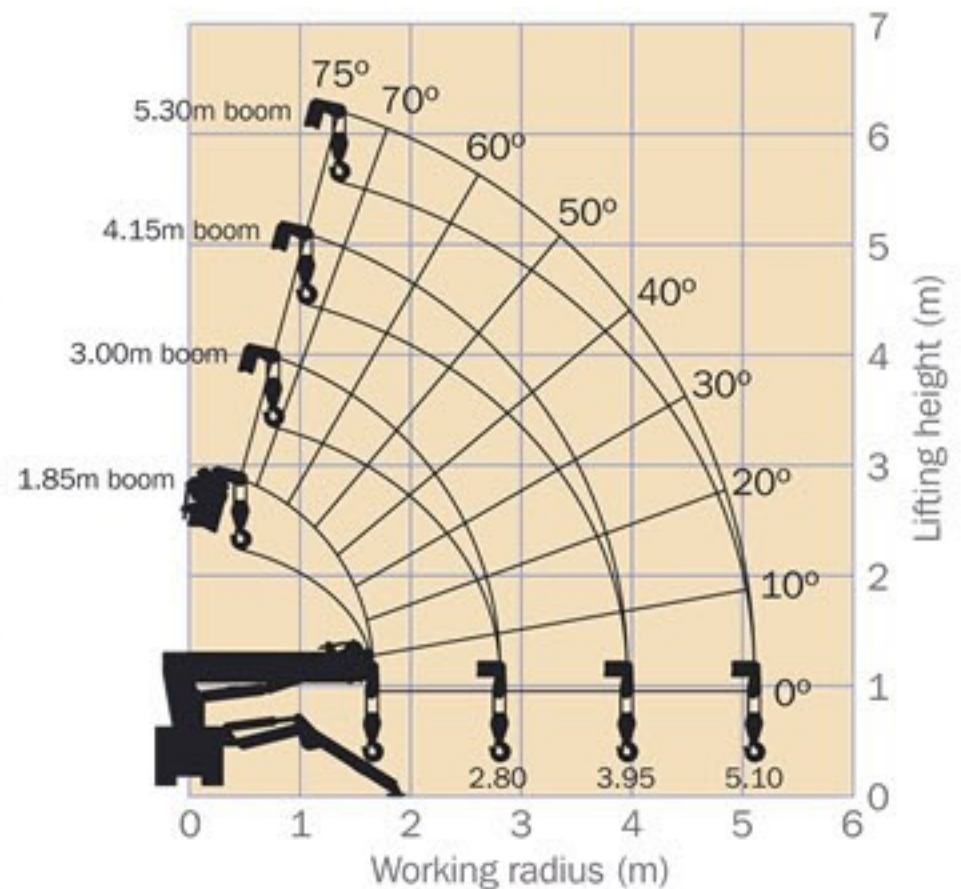


Maeda MC-104C Technical specifications

Specification	
Model	MC-104CR(CER)
Crane capacity	995kg x 1.1m
Max. working radius	5.10m
Max. lifting height	Approx 5.5m
Hook speed	4.0m / min (4 falls)
Single line speed	16.0m / min (4th layer)
Wire rope	WRC 6 x Fi (29) φ 6mm x 39m
Telescopic system:	
Boom length	1.85m~5.30m
Telescoping speed	3.45m / 14 sec
Boom type	Fully automatic 4-section pentagonal telescopic boom
Derricking angle / time	0~75° / 12 sec
Slewing angle / time	360°continuous / 1.8 rpm
Outrigger system	4 Multi position box type with lock valves
Traction system:	
Drive	Hydrostatic type, stepless forward and reverse
Travel speed	0~2.4km/h
Gradability	20°
Crawler ground length	1044mm
Ground pressure	0.29kg/cm ²
Crawler width	180mm
Engine:	
MC104CR - Petrol	Kubota GH280-E-GCLSY-ME1
Type	One-cylinder air cooled 4-stroke petrol engine
Max. output	4.9 Kw / 1800rpm
Starting method	Electric and recoil
Fuel	Petrol
Fuel tank capacity	6L
MC104CR - electric	5A-EB434-01Mitsubishi Fully enclosed fan cooled motor
Type	5.5 kW 4P 400V
Size & Dimensions:	
Length x Width x Height	
MC104CR	1980mm x 600mm x 1305mm
Length x Width x Height	
MC104CER	2180mm x 600mm x 1305mm
Weight MC104CR	1050 kg
Weight MC104CER	1050 kg
Standard equipment:	
	Remote control
	Working light
	Hour-meter
	4-fall hook block
	Black rubber tracks
Optional equipment:	
	White rubber tracks
	Single fall hook
	Two fall hook
	Loadwise safe indicator
	Wireless radio remote control



Working range chart



The working range chart applies to cases without load and does not include boom deflections.

Due to improvements, the specifications are subject to change without notice.

Total rated load (Outriggers at maximum position)							
1.85 boom		3.00 boom		4.15 boom		5.30 boom	
Working radius (m)	Total rated load (kg)	Working radius (m)	Total rated load (kg)	Working radius (m)	Total rated load (kg)	Working radius (m)	Total rated load (kg)
< 1.1	995	< 1.1	995	< 1.8	820	< 2.4	650
1.3	980	1.3	980	2.0	750	2.5	620
1.5	890	1.5	890	2.5	620	2.8	550
1.65	790	2.0	750	2.8	550	3.0	500
		2.5	620	3.0	500	3.5	380
		2.8	550	3.5	380	4.0	300
				3.95	300	4.5	250
						5.1	200

Based on actual working radius that takes into account boom deflections under load. Includes 15kg of Hook Block.